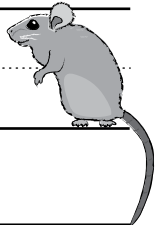
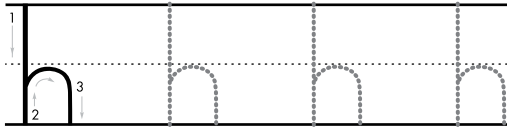


Handwriting practice lines for uppercase H. The first row contains four dashed uppercase Hs for tracing, followed by three empty rows for independent practice. Each row consists of a solid top line, a dashed middle line, and a solid bottom line.



Handwriting practice lines for lowercase h. The first row contains four dashed lowercase hs for tracing, followed by three empty rows for independent practice. Each row consists of a solid top line, a dashed middle line, and a solid bottom line.